

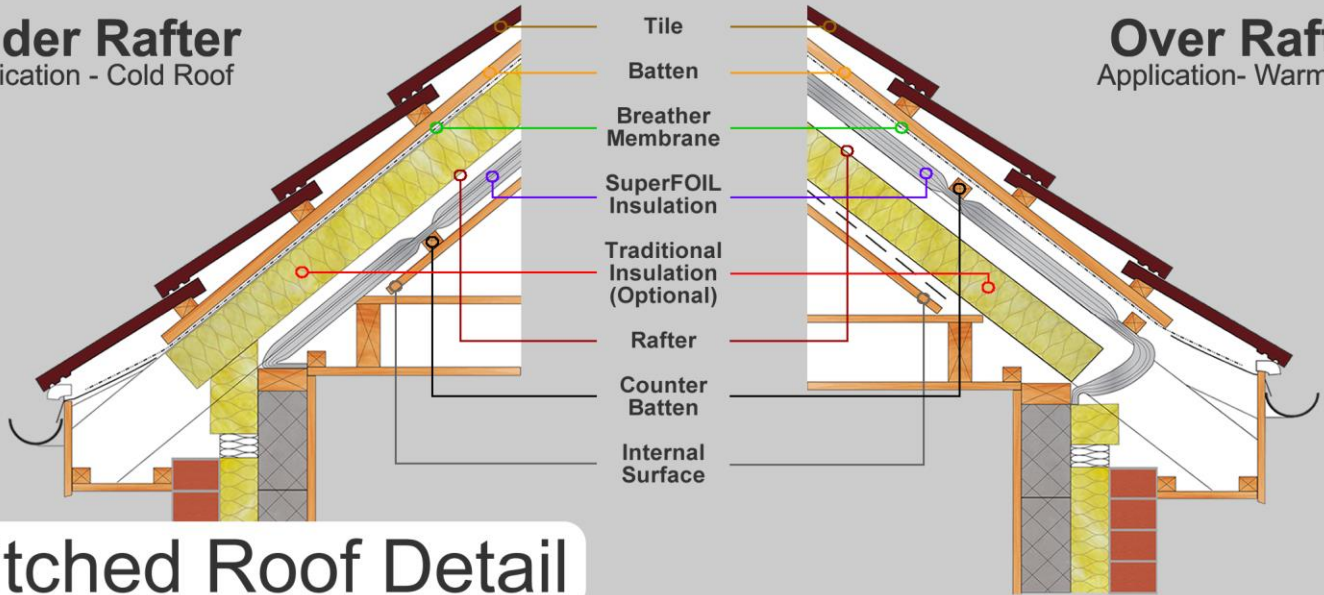
# SuperFOIL Insulation

## ROOF INSTALLATION GUIDELINES

**SuperFOIL can be installed over or under the rafter and provides continuous insulation. It is ideal for roofs and attic conversions.**

### Under Rafter Application - Cold Roof

### Over Rafter Application- Warm Roof



## Pitched Roof Detail

#### Under or over rafter

Apply SuperFOIL directly to the rafters from the roll either horizontally or vertically .

For over rafter start at the bottom and work up the roof overlapping at each junction. For under rafter start at the high point and work down, overlapping at each junction as you add the layers.

When installing vertically start at the high point and roll down the rafter.

Apply tension to the SuperFOIL as you staple in place; staple into the rafters with staples inserted at regular intervals, 50mm to 100mm spacing is recommended. Cut to length and fix the next layer.

Overlap all joints by a minimum of 50mm and staple onto the rafters where the joint crosses the rafter. Seal all joints using SuperFOIL tape.

At the eaves trim SuperFOIL around the rafters and seal to either the wall plate or the Cavity wall insulation if present.

To fix plasterboard when using SuperFOIL under rafters. Install battens sized according to the product used (SF19 = 25mm, SF40 = 38mm, SF60 = 63mm); at right angles to the rafters. Always apply battens around window reveals.

Apply tape to any tears, cuts or joints before fixing plasterboard to the battens.

#### Supplemental for Over Rafter Installation

For over rafter installation, fix superfoil direct onto the rafters. Install a batten to create an air space and onto the batten fix a breather membrane; Follow with a tile batten and tiles. With an over rafter installation a vapour check control layer is recommended to be fitted behind the plasterboard, to reduce the risk of interstitial condensation.

**NOTE:** If installing SF19BB, a separate breathable membrane is not required as SF19BB provides both insulation layer and breather membrane in one.

#### Points to Note

Overlapped joints should be overlapped by a minimum of 50mm & taped using 100mm SuperFOIL Tape.

Butt joints, such as at an intersection between a wall and a roof, (or 2 walls or 2 roofs pitches or any place where SuperFOIL will butt up a surface or other pieces of SuperFOIL) ensure that the Superfoil is firmly upagainst the adjoining surface / materiel, do not leave gaps or spaces between the 2 parts, cut the materials a little longer (2 to 3 mm) so they are pushing into the adjoining material. Then apply SuperFOIL 100mm wide tape to the joint to ensure the joint is sealed.

You can use 12" scissors/shears, a GUS rotating power cutter or a craft knife to cut SuperFOIL SF19, SF40 or SF60

SuperFOIL can be fixed using galvanised or stainless steel staples, appropriate to the thickness of the product being installed. For SF19 use 14mm staples, SF40 use 30mm staples SF60 use 40mm staples.

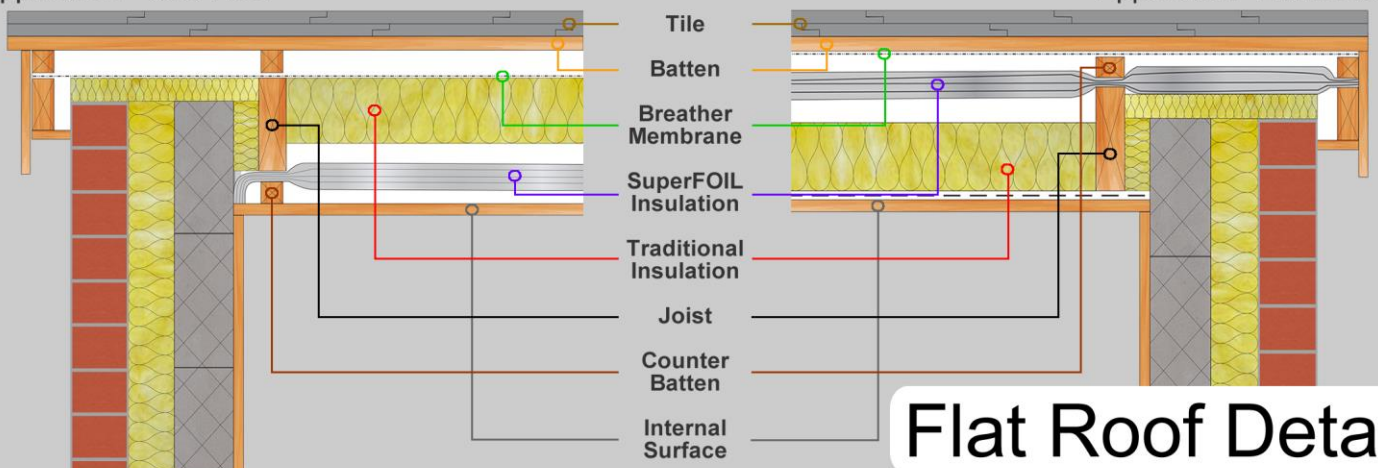
To achieve the performance levels stated SuperFOIL must be installed with an air gap on either side which can be created by using battens.

No special or protective clothing/handling is required. When installing outside in bright sunlight be careful of strong reflection.

SuperFOIL is light weight and easy to handle and should be stored indoors or under cover until used. Once fitted SuperFOIL should be covered within 48 hours.

### Under Joist Application - Cold Roof

### Over Joist Application- Warm Roof

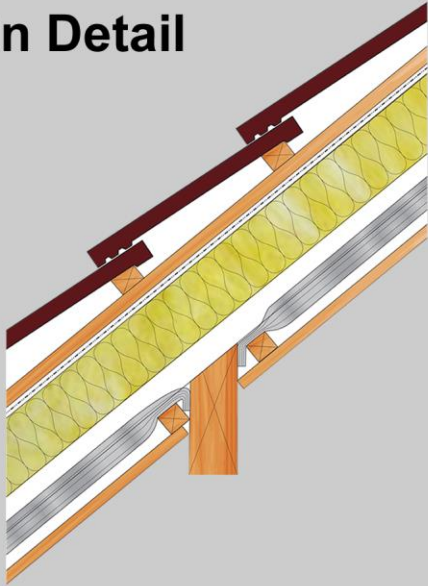


## Flat Roof Detail

# SuperFOIL Insulation

## ROOF INSTALLATION GUIDELINES

### Purlin Detail



#### Fixing SuperFOIL between purlins

At the purlins: Turn up the SuperFOIL and staple in place. Fix the SuperFOIL to the rafters; at the purlins fix a batten to trap the SuperFOIL tightly against the purlins.

#### Fixing SuperFOIL around purlins

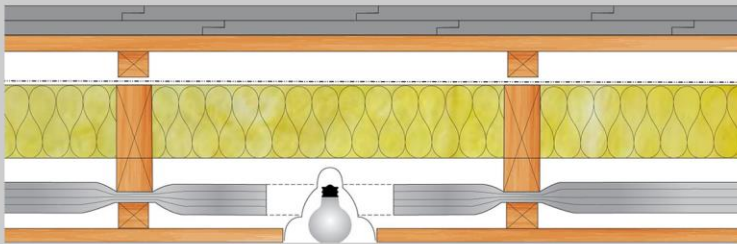
If there is a space through and behind the purlin cut the SuperFOIL and push between and behind the purlins; overlap and tape to the next piece of SuperFOIL.

Fix a batten at 90 degrees to the rafters and fix plasterboard to the battens in the usual way.

#### Other pipes and penetrations

Cut, trim and seal the edge of the SuperFOIL to provide a neat and close fit around all penetrations. SuperFOIL should never touch a metal flue or flue liner. It is recommended that any hot or cold pipes through the SuperFOIL be fully insulated with an appropriate pipe insulation.

### Downlighter Detail



#### Installation at the Eaves

##### Over Rafter

Staple the SuperFOIL to the rafters. At the eaves cut the SuperFOIL and take down between the rafters and fix to the wall plate or the cavity wall insulation. Seal the joint with staples and tape to create an airtight envelope.

##### Under Rafter

Staple the SuperFOIL to the underside of the rafters. At the eaves cut the SuperFOIL and take down between the rafters and fix to the wall plate or the cavity wall insulation. Seal the joint with staples and tape to create an airtight envelope.

#### Downlighters

It is recommended that all downlighters be fitted with an approved hood/cover and SuperFOIL should be trimmed to the hood/cover ensuring a minimum 25mm clearance from the fitting. The cut edge must be completely sealed using SuperFOIL Tape.

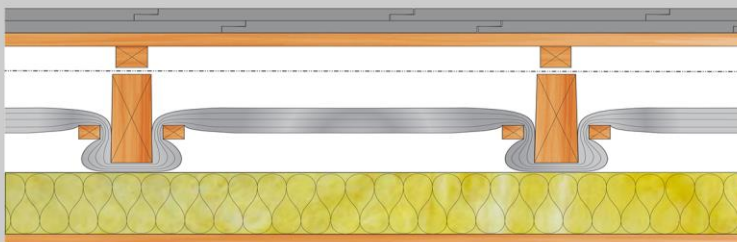
#### When using two layers of SuperFOIL "DUET"

When using SuperFOIL in 2 or more layers for maximum performance ensure there is a 25mm air space between each layer of SuperFOIL; battens can be used to provide this air space.

#### When using in conjunction with other insulation "COMBI"

When using SuperFOIL in conjunction with other insulation between rafters for maximum performance always ensure there is a 25mm air space between the SuperFOIL and the other insulation.

### Recessed Detail



#### Installer notes:

SuperFOIL can be used in all types of roof structure.

SuperFOIL can be laid horizontally or vertically depending on the characteristics of the area to be insulated.

SuperFOIL can be cut with a craft knife or scissors.

SuperFOIL is attached using galvanised or stainless steel staples.

Contact with lead, copper and its alloys should be avoided.

Do not use SuperFOIL to insulate a chimney flue.

When using SuperFOIL around downlighters a 30mm clear cavity must be provided. The use of fire rated fittings or fire hoods is recommended.

SuperFOIL is most effective with an air gap easily provided with battens.

SuperFOIL should be stored under cover and protected from the elements.

SuperFOIL tape (20m x 100mm) to be used on all overlaps and joints.

Be careful of the sun's reflection when installing outside.



For any other advice contact our help desk on 01 636 63 99 00 or email [admin@superfoil.co.uk](mailto:admin@superfoil.co.uk).